



**HWY 111 NORTH
TO COOKEVILLE
NASHVILLE
LEXINGTON, KY
I-40 — I-75 — I-81**

**HWY 111 AND
CLOVER-LEAF
FIVE LANES**

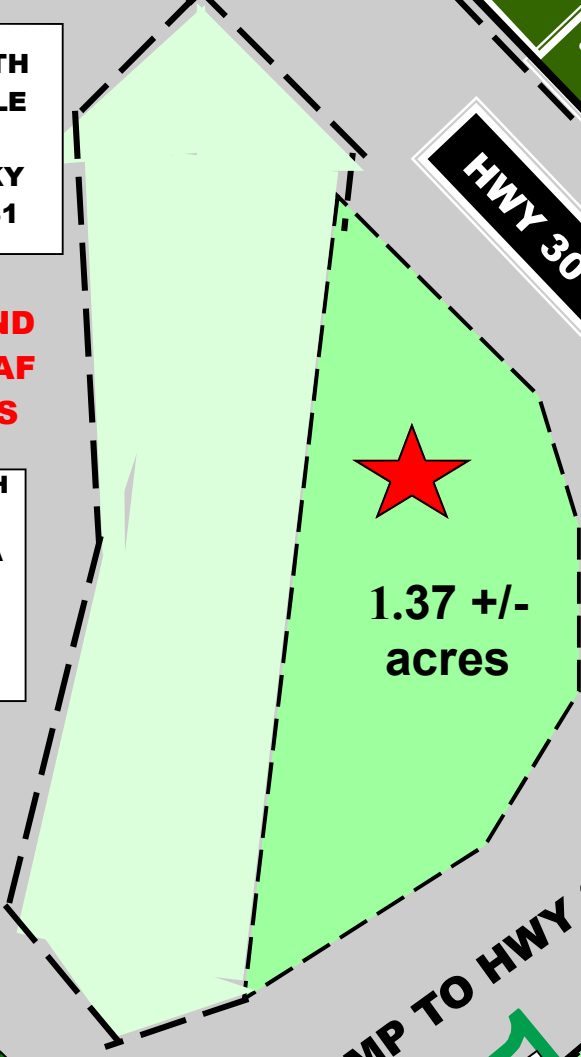
**HWY 111 SOUTH
TO CHATTANOOGA
ATLANTA
FLORIDA
I-75 — I-24**

**HWY 30
WEST TO
MCMINNVILLE**

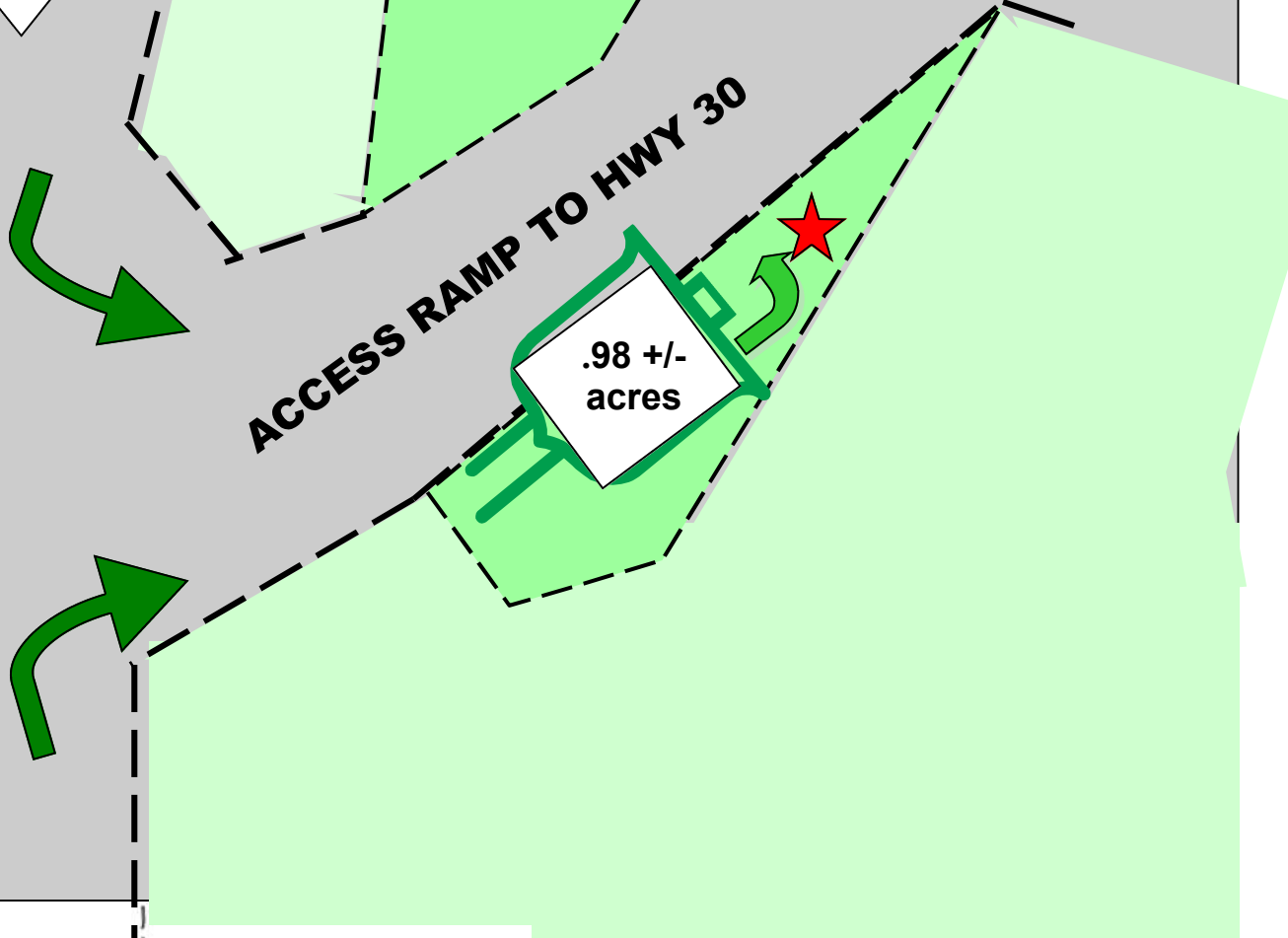
**HWY 30 EAST TO
CROSSVILLE — PIKEVILLE**

- Fall Creek Falls State Park
- GrandView Village Resorts
- Barna Log Homes
- Long Branch Lakes
- Boy Scouts of America

HWY 30 - HISTORIC TRAIL OF TEARS



**1.37 +/-
acres**



ACCESS RAMP TO HWY 30

**.98 +/-
acres**